



# SWALECLIFFE COMMUNITY PRIMARY SCHOOL

## Weekly Newsletter

Week Beginning: 24.11.25

### This Week's Dates for your Diary

**24.11** Year 5 Spooky Story Day

**26.11** Year 6 World War Two Day

 **27.11** PFA Christmas Shopping

 **28.11** PFA Christmas Shopping

**28.11** 3H Swimming


**28.11** After school clubs end



### Term 2 Dates for your Diary


**01.12** No After School Clubs until Term 3

 **02.12** Year R Nativity Performance


 **03.12** Year R Nativity Performance

**04.12** Year 1 Magic & Mystery Day

 **07.12** PFA Festive Fair

 **10.12** Christmas Jumper Day & Christmas Dinner

**12.12** Rock Steady Concert

 **18.12** Class Christmas Parties



### P.E Days - Reminder

Yr R Thurs

Yr 1 Tues & Wed

Yr 2 Mon & Fri

Yr 3 Wed & Fri

Yr 4 Thurs & Fri

Yr 5 Mon & Thurs

Yr 6 Mon & Wed

### Term Dates

Term 2 27<sup>th</sup> October - 19<sup>th</sup> December

Term 3 6<sup>th</sup> January - 13<sup>th</sup> February

Term 4 23<sup>rd</sup> February - 2<sup>nd</sup> April

Term 5 20<sup>th</sup> April - 22<sup>nd</sup> May

Term 6 1<sup>st</sup> June - 17<sup>th</sup> July



## SCHOOL LUNCH ORDERS

We just wanted to say thank you for ordering your child's lunch in advance – it really helps the kitchen prepare enough food for everyone. However, we would greatly appreciate it if you could also share your child's chosen menu option with them. We are finding that many children arrive unsure of what they are having and sometimes decide they no longer want it.

## PARKING

We appreciate your efforts to park considerately along our very narrow and busy residential streets. However, we are still receiving reports of cars being parked on double-yellow lines, across driveways, on bends (which reduces visibility and can be dangerous), and even blocking the entire pathway. Please take a moment to think about how unsafe this can be for children and families walking home, who need clear and safe access to the pavement. Thank you for your understanding and cooperation.

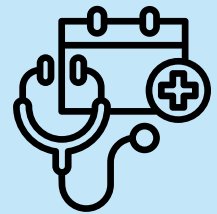


## APPOINTMENTS IN SCHOOL TIME

We are increasingly finding that pupils are being taken out of school for appointments during the school day. Whilst we understand that emergency or specialist appointments are sometimes unavoidable, we kindly ask that routine appointments (such as dental check-ups and GP visits) are arranged outside of school hours wherever possible.

For all appointments, please ensure that the school office is notified at least 24hrs in advance and is provided with proof, such as a letter, text message or appointment confirmation.

Thank you for your support.



## YEAR R NATIVITY

The Year R children will be performing their Nativity on Tuesday 2nd December at 9.15am and Wednesday 3rd December at 2.15pm. Families will be able to take their children straight home if you attend the performance on the Wednesday.

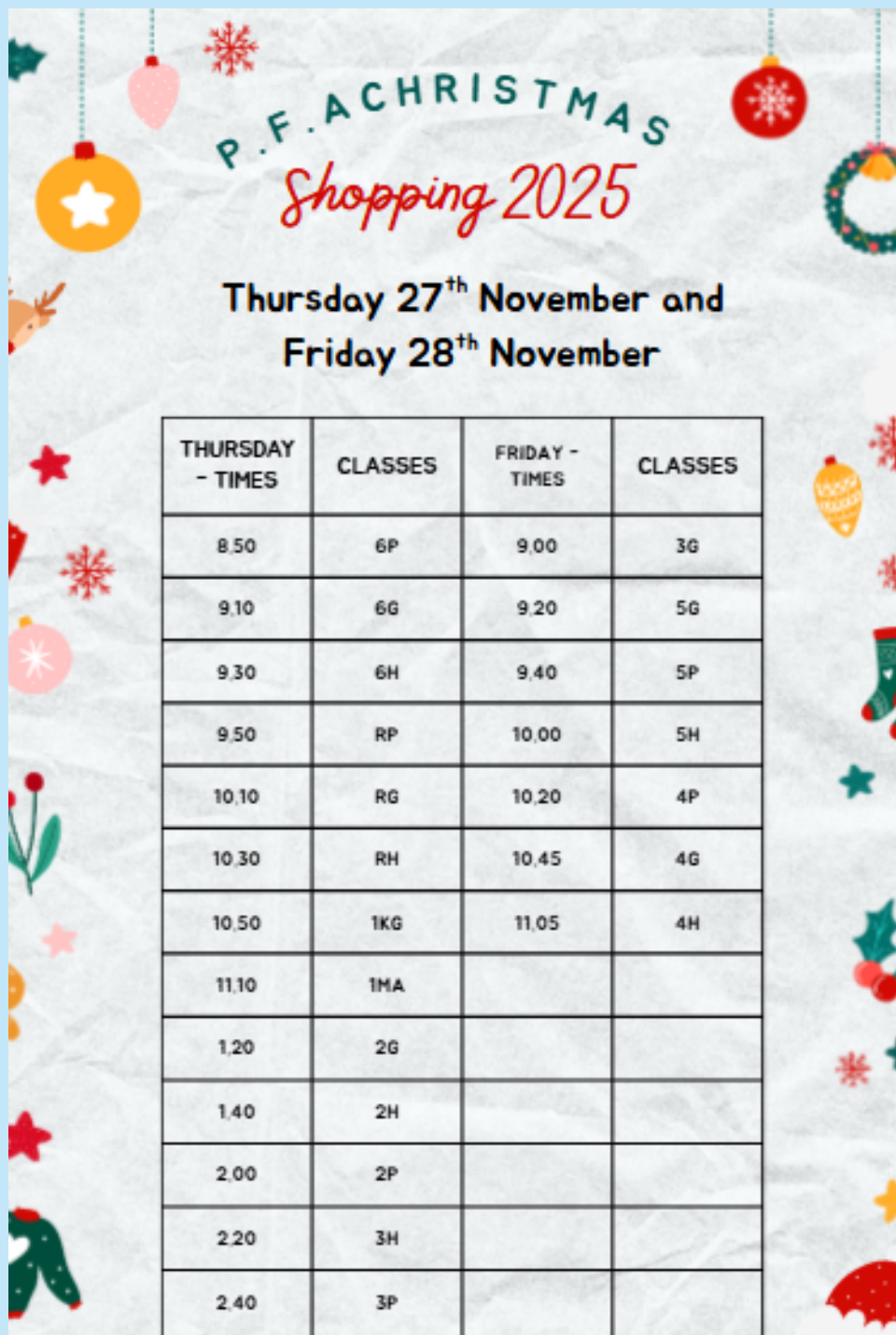
Although we welcome the wider family, we ask that you only attend **one** of the performances so that everyone (including the children) can enjoy these. No booking is required just turn up on your preferred date and enter through the Infant hall.





## PFA CHRISTMAS SHOPPING DAYS

This year, we wanted to let you know in advance what days your children will be visiting Christmas Shopping with their class. This is optional of course and your child does not have to take part but they do love it. They can buy one present should you wish. If you do wish for your child to take part, see the information from our PFA on page 7 of this newsletter. If your child is in 3P, please bear with us if they are running 5 minutes late at the end of the day on the Thursday. If you would like to discuss the shopping from your child's point of view then email class teacher, Miss Garton or Miss Hill.



**P.F.A CHRISTMAS Shopping 2025**

**Thursday 27<sup>th</sup> November and Friday 28<sup>th</sup> November**

THURSDAY - TIMES	CLASSES	FRIDAY - TIMES	CLASSES
8.50	6P	9.00	3G
9.10	6G	9.20	5G
9.30	6H	9.40	5P
9.50	RP	10.00	5H
10.10	RG	10.20	4P
10.30	RH	10.45	4G
10.50	1KG	11.05	4H
11.10	1MA		
1.20	2G		
1.40	2H		
2.00	2P		
2.20	3H		
2.40	3P		



## PARENT FRIENDS ASSOCIATION EVENTS

### Christmas Shopping - Thursday 27<sup>th</sup> & Friday 28<sup>th</sup> November 2025

We're excited that our much-loved Christmas Shopping event for the children will be happening again this year! It will take place during school hours on **Thursday 27<sup>th</sup>** and **Friday 28<sup>th</sup> November**, and it's always a festive highlight.

Here's how it works:

Children visit our special Christmas Shop and choose small gifts for family, friends (and even pets!). We wrap them up and send them home ready for the big day.

Gifts cost £2.75 each, and children can pick 1 to 10 gifts.

Categories include: adult male, adult female, child, baby, dog, and cat.

To take part, please visit <https://www.pta-events.co.uk/swalecliffe/index.cfm?event=event&eventId=107359> by **Wednesday 26<sup>th</sup> November** to choose and pay for gifts.

A few extra notes:

For siblings, our preference is gifts are divided between them at the online ordering phase to accommodate for the class shopping schedule. If this is not possible or you have any other queries please email us:

[swalecliffepfa@swalecliffe.kent.sch.uk](mailto:swalecliffepfa@swalecliffe.kent.sch.uk)

Gift labels will be sent home at the start of shopping week to populate with recipients names to help the children with their shopping. Please fill them in and send them back with a bag for the gifts on the shopping days. It is helpful if our younger children have a list which include ages of the person being bought for.

Can you help us wrap?

We need 18 volunteers per session (Thursday morning & afternoon, Friday morning). It's a lovely way to get involved – email us if you or someone you know can lend a hand at [swalecliffepfa@swalecliffe.kent.sch.uk](mailto:swalecliffepfa@swalecliffe.kent.sch.uk)

Thank you for helping make this magical event happen!





## PARENT FRIENDS ASSOCIATION EVENTS CONTINUED


### Festive Fun - Sunday 7<sup>th</sup> September 2025

We're getting into the holiday spirit and hope you will join us for an afternoon of Festive Fun at school on Sunday 7<sup>th</sup> December from 12 to 3pm! Bring your family and friends – there's something for everyone!

Here's a sneak peek at what's in store:

 Visit Father Christmas


Book a slot to meet Santa and receive a special gift! Pre-book [here](#).

 Get active in our 'Games Hall'!

Enjoy festive sports with Mini Athletics, fun stalls and competitions, and our ever-popular inflatable snow globe!

 Relax in our 'Refreshments Hall'

Grab a hot drink or tasty treat, listen to carols from our school choir, and get creative with festive arts and crafts.

 Plus lots more seasonal surprises!

Can you help us make the magic happen?

We're looking for 1-2 adult volunteers per class to help run activities. Slots are:

10:30-12:00 (set up)

12:00-1:30

1:30-3:00

3:00-4:00 (tidy-up crew!)

Email us at: [swalecliffepfa@swalecliffe.kent.sch.uk](mailto:swalecliffepfa@swalecliffe.kent.sch.uk)

#### Prize Donations Needed!

We will be collecting items the week before the event – more info to follow about these donations but here is what we are asking each year group to bring:

Reception, Year 1 & Year 2 – Chocolate treats for the tombola 

Year 3, 4 & 5 – A bottle of booze 

Year 6 – Mince pies, shortbread or chocolate logs 

We are happy to take any other new prize donations or ideas you have for this event too!

Thank you for your support – we can't wait to celebrate with you !

## PFA CHRISTMAS CARDS

### CHRISTMAS PROJECT

Turn your child's creativity into personalised gifts that everyone will love!



#### HOW TO ORDER:

- 1 Visit [apfsorders.co.uk](http://apfsorders.co.uk)
- 2 Enter the unique artwork code on the back of your child's artwork under the QR code.
- 3 Place your order and get your unique gifts delivered to school.



**Why doesn't the QR code scan on the back of my artwork?**  
The QR code is for internal use only and won't work with external devices. Head to [apfsorders.co.uk](http://apfsorders.co.uk) and enter your unique code.

**What if I miss the deadline?**  
You can still place an order, but the school won't receive fundraising, and your items will be sent to your home with an additional postage fee.

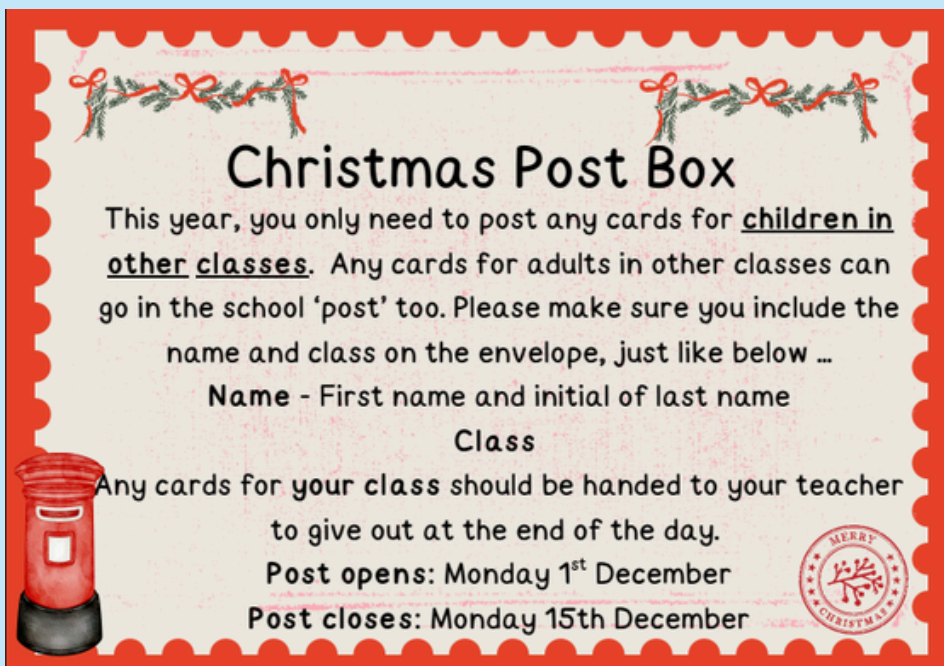
**What if you didn't send us your artwork?**  
No problem, just enter the 8 character code that appears under your QR code on the reverse of your artwork and you will be prompted to upload a photo of your artwork (.jpeg).

**When will I receive my order?**  
Your order will be delivered to the school along with all other orders on the date agreed by the organiser.

01227 262417 [info@apfs.org.uk](mailto:info@apfs.org.uk)   

Please see the email sent on Wednesday 19<sup>th</sup> November for more information. These orders help raise funds for the school via the PFA. Thank you.

## CHRISTMAS POST




### Christmas Post Box

This year, you only need to post any cards for children in other classes. Any cards for adults in other classes can go in the school 'post' too. Please make sure you include the name and class on the envelope, just like below ...

**Name** - First name and initial of last name  
**Class**

Any cards for your class should be handed to your teacher to give out at the end of the day.

**Post opens: Monday 1<sup>st</sup> December**  
**Post closes: Monday 15th December**



Teachers will be going through this with the children in class next week ahead of the post boxes going out on Monday 1<sup>st</sup> December.



## EMAILS SENT OUT THIS WEEK

Year 5 Spooky Story Day - Year 5  
Christmas Artwork Ordering - Whole School  
Stranger Danger - Whole School

## CONTACT INFORMATION

Should you need to contact the school, you can do so by emailing  
office@swalecliffe.kent.sch.uk or using the link on our website:  
swalecliffeprimary.org/contact-details/

If you wish to contact a teacher then use the office@swalecliffe.kent.sch.uk and  
write in the subject line who you wish it to go to e.g. FAO - Miss....

To report an absence please email absence@swalecliffe.kent.sch.uk, giving your  
child's name and class and reason for absence.

If you need to contact a DSL (Designated Safeguarding Lead), you can do so  
directly using the following email-

DSL@swalecliffe.kent.sch.uk

Executive Headteacher: Mr Ben Cooper

Head of School (Acting): Miss Leah Garton

Deputy Head (Acting): Mrs Kate Roy

Inclusion Lead & Lead DSL (Acting): Mrs Julie Deeks

Wellbeing Lead: Ms Carrie Hill

Telephone Number: 01227 272101

Office Email Address: office@swalecliffe.kent.sch.uk

Website: <https://www.swalecliffeprimary.org/>

## USEFUL LINKS ON OUR WEBSITE



**Swalecliffe Community  
Primary School**

<https://www.swalecliffeprimary.org/topic/parents>

Homework Guide: [Swalecliffe Community Primary School - Homework](https://www.swalecliffeprimary.org/topic/parents)