



SWALECLIFFE COMMUNITY PRIMARY SCHOOL

Weekly Newsletter

Week Beginning: 15.09.25

This Week's Dates for your Diary

15.9 Yr R Full Time
17.9 Macmillan Coffee Morning
19.9 3G Swimming



Term 1 Dates for your Diary

22.9 Pre-Loved Uniform Sale
26.9 School Photos
11.10 New Year R 2026 Open Day
15.10 Flu Vaccines



P.E Days - Reminder

Yr R Thurs
Yr 1 Tues & Wed
Yr 2 Mon & Fri
Yr 3 Wed & Fri
Yr 4 Thurs & Fri (see message re: hockey below)
Yr 5 Mon & Fri
Yr 6 Mon & Wed

Term Dates

| | |
|--------|--------------------------|
| Term 1 | 3 September - 17 October |
| Term 2 | 27 October - 19 December |
| Term 3 | 6 January - 13 February |
| Term 4 | 23 February - 2 April |
| Term 5 | 20 April - 22 May |
| Term 6 | 01 June - 17 July |



MESSAGE FROM EXECUTIVE HEADTEACHER

Dear Parents,

It is with deep sadness that I write to you with this news.

I'm aware that some of you may already know what I am writing to tell you today, but we have wanted to respect the family's wishes in terms of sharing personal information, and to share this news with staff first, which we did yesterday. Mrs Alanna Grant, a much loved and respected High-Level Teaching Assistant (and Emotional Literacy Support Assistant), has been off school poorly since the start of the summer term. She visited the school in July having already had a significant operation.

Tragically, she passed away on Tuesday, following her courageous battle with cancer, at the age of just 44. Sometimes things are incredibly unfair, and on this occasion that doesn't even begin to sum up just awful this is. She was too wonderful, too young and it was all too quick. Obviously, our thoughts go to Nathan and to Jodie, Charlie, and Ollie her children, and to all her family and friends, and loved ones during this very difficult time.

Equally, we know that staff, (as friends and colleagues), many parents who knew her, and the children she worked with, will be affected too by this dreadful news. We haven't yet spoken to the children about it, but we will make sure we do that in the best possible way, and once again in a way that respects the family's wishes.

However, as families, depending on how well you or your children knew Mrs Grant, we will let you share the news with them, or not, in the way that you think is best. Children of different ages will understand the situation differently and you, as parents, know your own child best and will be able to gauge their understanding and answer their questions, but we recognise that this will, of course, be a huge shock and a process of grief for many of the school community. Staff will be available to support your child through this difficult time on Monday and beyond, but please do let us know if you feel your child needs some extra help to cope with the situation. We plan to set up a book of condolences at school soon, if you wish to express your sympathies to the family. Your child may wish to write or draw a message at home or school to add to it as well if that helps them.

Finally, saying the right words at this time and certainly writing them, is almost impossible. Please forgive me if I have in any way got anything wrong for you personally in what I've said. I truly don't know what the right words are. I can't tell you how sorry I am to have had to give you this news today.

We shall continue to update the school community as to how best to mark Mrs Grant's life as her school family in close communication with her loved ones.

Mr Cooper

MESSAGE FROM HEAD OF SCHOOL (ACTING)

As always, a huge thank you for all you do to prepare your children for school every morning. It really is fantastic how they have settled back into the year so successfully.

Just a few reminders to make the morning run even more smoothly and safely.

Gates - We encourage all our children to say goodbye to parents at the gate. Messages can be passed on through the adult on gate duty, via the office or by email. Of course, if any of our children are feeling anxious or upset for any reason, we will support you and them. Our Year R families are not be quite there yet so please understand if they are accompanying their children in at the moment.

Key Stage Two Gate - Please remind any of your children in Years 3-6 that they should wait by the benches or along the wooden 'railing' not in the scooter/ bike sheds, not under the trees or in them. They certainly should not be in the junior car park. We will also be reminding the children in assembly.

The 'Wooded Area' - Children should not climbing over or under the wooden 'railings' in to this area, just outside of our foyer.



Thank you for support,
Miss Garton

HOMEWORK, YEARS 1 - 6

When joining our school and when signing the Home School Agreement, homework is one of the responsibilities agreed on by children and parents. As a primary school, we absolutely do not have onerous expectations for this. Above all else, reading will always be the most important home activity that supports us at school. However, we do set online spellings each week through Spelling Shed and this year we are starting Times Tables Rockstars. This will go live from Monday (15.09.25). A message from the Maths Team:

Times Tables Rock Stars has landed at Swalecliffe and is launching across the school week beginning 15th September.

Please take the time to watch the parents' guide by following the [click here](#).

There is a full parent guide to homework at Swalecliffe on our website:
[Swalecliffe Community Primary School - Homework](#)



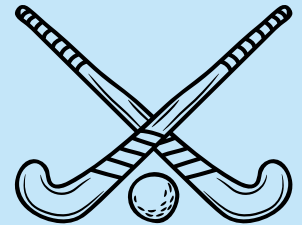
YEAR 4 HOCKEY

Year 4 Families,

Exciting news! Herne Bay Hockey Club have again offered us sessions with one of their coaches this term. These sessions will be for our Year 4 children, for whom hockey is the focus of their PE curriculum this term.

This does mean slightly altered arrangements for Year 4 PE this term though: Year 4 will always have indoor PE on Thursdays but according to the table below, depending on whether they have hockey, their Friday PE lesson may take place on a Tuesday when the free session with HBHC are available. They will need to wear their PE kit on the Tuesdays they have hockey. Absolutely no worries though, if they forget and wear their kit on Friday as well, although they had hockey on Tuesday.

| | 1.10 – 2.00 | 2.05 – 2.55 |
|----------------------------|-------------|-------------|
| 16 th September | 4H | 4G |
| 23 rd September | 4P | 4H |
| 30 th September | 4G | 4P |
| 7 th October | 4H | 4G |
| 14 th October | | 4P |



YEAR R

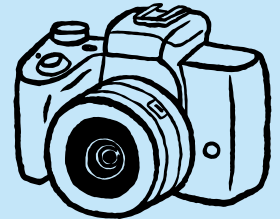
Please can the Year R children bring in a family photograph next week ready for our learning on different families and also get to know each other



SCHOOL PHOTOS

The new company that we moved to last year will be taking sibling photo on **Friday 26th September**. They take sibling photos before school. They will NOT be taking sibling photos during the school day.

If you wish to have a sibling photo of your Swalecliffe children please go to the **Infant Hall at 8.00 am** .



MACMILLAN COFFEE MORNING REMINDER

Our coffee morning in the Infant Hall this term is in support of Macmillan cancer support. Please come and join us for coffee or tea and cake to raise funds for Macmillan from drop off until 9.30am. There will be a cash donation box on the cake table - no minimum donation, as every little helps.

Why come in for coffee on Wednesday 17th September?

have a relaxing moment just for you!

Our school coffee mornings are very informal and mums, dads, grandparents, carers, aunties, uncles and friends of the family are ALL very welcome.

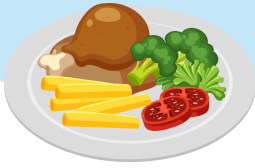
Cake donations, homemade or shop-bought, will all be gratefully received, but please ensure they do not contain any nuts to follow our school policy of being a nut-free zone. Cake donations may be dropped off on Tuesday afternoon (16th September) from 3.00pm to the school office or after 8.15am on Wednesday morning to the Infant Hall.



Thank you,
Miss Hill
(Wellbeing and Mental Health Lead)

SCHOOL DINNER UPDATE

The dinner booking deadline on Parent Pay has now been extended to **9am**, please make sure all dinner selections are made by this time.



FOREST SCHOOL, YEARS 1 -6

Mrs Rowe sent out a letter with Forest School dates last week and these will be added to the weekly newsletter each week as a reminder.

Please can we just remind you about appropriate clothing for these sessions:

The children should be wearing their school top half of uniform and sensible bottoms that can get mucky. Shorts are not allowed. They can bring in shoes to change into but these should also be appropriate for the forest. Thank you.

Year R will start Forest School next term.

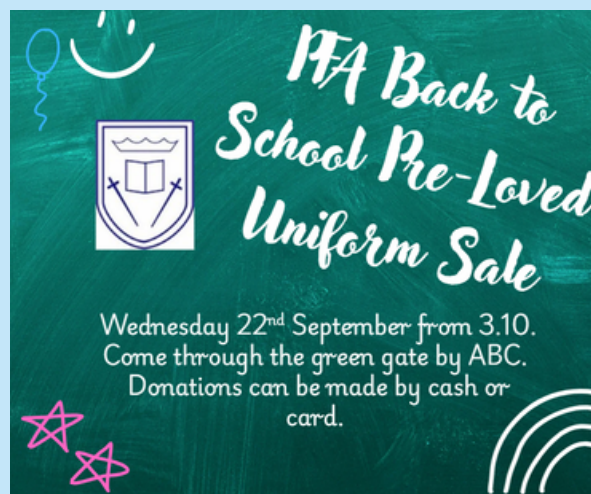


PARENTS & FRIENDS ASSOCIATION (PFA) NOTICES

Please use this form to order pre-owned uniforms from the school
[Pre-Owned School Uniform Form](#)

We always need volunteers to help at our events. If you can lend a hand please contact the PFA to put your name down to help.

swalecliffepfa@swalecliffe.kent.sch.uk



IMPORTANT REMINDER: WE ARE A NUT-FREE SCHOOL

Please remember that we are a nut-free school. We have several children with severe nut allergies, and even trace amounts of nuts can cause a life-threatening reaction.

We kindly ask that no nuts or nut products (including peanut butter, Nutella, cereal bars containing nuts, etc.) are brought into school in lunchboxes or snacks.



Thank you for helping us keep all of our children safe.

CHANGES TO CHILDREN'S COLLECTION ARRANGEMENTS

Please can you let the school office know if there are going to be any changes in the children's collection arrangements at least 24hrs in advance either by email or call to the school office unless you have an emergency situation which requires an unexpected change.

Routine appointments for Dentist/GP etc should be made outside of school hours.

ABSENCE REPORTING

Please can we remind parents that absences from school should be reported to the school office either by phone or email on absence@swalecliffe.kent.sch.uk by 8.45am.





EMAILS SENT OUT THIS WEEK

Year 3 Swimming Letter
Volunteer Readers - Whole School

CONTACT INFORMATION

Should you need to contact the school, you can do so by emailing
office@swalecliffe.kent.sch.uk or using the link on our website:
swalecliffeprimary.org/contact-details/

If you wish to contact a teacher then use the office@swalecliffe.kent.sch.uk
and write in the subject line who you wish it to go to e.g. FAO - Miss....

If you need to contact a DSL (Designated Safeguarding Lead), you can do so
directly using the following email-
DSL@swalecliffe.kent.sch.uk

Executive Headteacher: Mr Ben Cooper
Head of School (Acting): Miss Leah Garton
Deputy Head (Acting): Mrs Kate Roy
Inclusion Lead & Lead DSL (Acting): Mrs Julie Deeks
Wellbeing Lead: Ms Carrie Hill

Telephone Number: 01227 272101
Office Email Address: office@swalecliffe.kent.sch.uk
Website: <https://www.swalecliffeprimary.org/>

USEFUL LINKS ON OUR WEBSITE



**Swalecliffe Community
Primary School**

<https://www.swalecliffeprimary.org/topic/parents>